

TEKLYNX®

LABEL MATRIX®

SETTING THE STANDARD

VERSION 7



BAR CODE LABELING AND INTEGRATION SOFTWARE

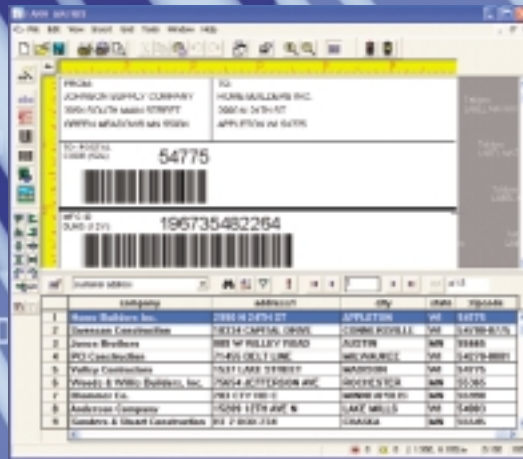


SIMPLE



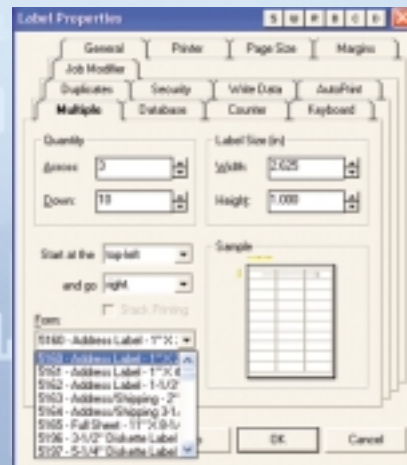
Wizards make the design process simple by giving you step-by-step instructions while providing helpful hints.

FLEXIBLE



The Data Grid lets you view records live on the design screen making record selection and label printing flexible, easy and fast.

FEATURE-PACKED



Using the feature-packed interface you can easily select a preformatted label form or create a customized form to meet any labeling need.

LABEL MATRIX® 7

Simple, Flexible Bar Code Labeling and Integration Software

LABEL MATRIX 7—FEATURE-PACKED AND EASY TO USE.

True WYSIWYG Imaging

Eliminates guesswork by ensuring labels print exactly as they appear on your screen.

Multi-Document Interface

Displays several label design windows concurrently.

Label Templates and Samples

Includes over 100 compliance label templates and label samples.

Label Design, Printing & Database Wizards

Helpful wizards walk you through each step of the label creation process.

Rich Text Format Editing

Make use of existing documents from Microsoft Word and other word processing or desktop publishing programs.

Variety of Shapes

Lines, rectangles, circles, ellipses and octagons can be created in any size or color.

Graphic Images Capability

Lets you import and size multiple types of graphic images.

Database Connectivity

Access database records sequentially or through an unlimited number of "key" database search fields.

Variable Field Capability

Allows for date, time and serial (counter) stamps, plus keyboard input prompts and linked/combo expressions.

Linear and 2D Symbologies

Support for over 34 linear symbologies and 12 2D symbologies.

Print Job Modifier

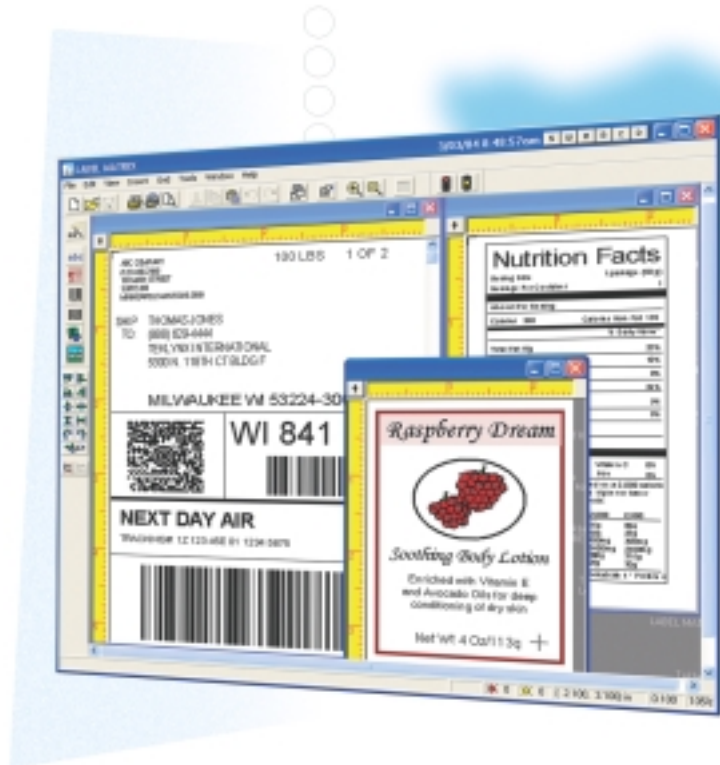
Directly modify printer code and save to a file.

OLE Automation

Allows for third-party integration for labeling automation.

LABEL MATRIX 7 labeling software gives you the power to design and print labels with ease and flexibility to meet your most demanding labeling needs.

Whether you need address labels for your small business or thousands of inventory labels for a multi-site warehousing plant, LABEL MATRIX can do the job.



Advanced Label Design with Unparalleled Ease of Use.

Easy to Learn and Use even for beginners—familiar Windows icons, tab dialogs and a drag-and-drop interface make LABEL MATRIX instantly recognizable to anyone who has used a Windows software package.

Comprehensive Bar Code Support for over 45 symbologies including Code 39, Code 128, UPC A, UPC E, UCC/EAN-128, PDF 417, Data Matrix, MaxiCode, RSS-14 Composites and more.

Database Connectivity Options include 32-bit OLE DB support for Access, ASCII, dBase, Excel, FoxPro, ODBC, SQL server and others.

Enhanced Printer Support for more than 1000 thermal and thermal transfer printers, as well as any Windows printer, allows you to maximize your printer's performance and print large runs of labels in a very short time.

Specialized Printing Options for printing "stacked" labels and tickets, and for reversing the order of pages in a print job.

Advanced Integration Features for automating print jobs (AutoPrint), logging data to a file (Write Data), and integrating label printing with other programs via command line calls (LMWPrint) or OLE Automation.

LABEL MATRIX⁷

(Windows 95, 98, ME, NT 4.0, 2000 and XP compliant)

Choose the Leader.

LABEL MATRIX is one of TEKLYNX's globally recognized label design software solutions, providing you with the flexibility to handle all of your labeling applications—today and in the future.

| FEATURE | LABEL MATRIX QuickDraw | LABEL MATRIX | LABEL MATRIX PowerPro |
|---|------------------------|--------------|-----------------------|
| General | | | |
| Multiple language editions available | • | • | • |
| Network version available | | • | • |
| Label Design | | | |
| Change colors, fonts and resize images with ease | • | • | • |
| Easily insert bar codes, text, paragraphs, lines, shapes and graphics | • | • | • |
| Preview thumbnail label designs and descriptions before opening | • | • | • |
| Over 100 compliance label templates included | | • | • |
| PowerWrap automatic paragraph sizing and scale to fit | | • | • |
| Bulleted & numbered lists with hanging indent options | | • | • |
| Multiple Undo/Redo ability | single | • | • |
| Clip art library included | | | • |
| Bar Codes | | | |
| Support for over 34 linear bar codes | • | • | • |
| UCC/EAN-128 & MaxiCode wizards | | • | • |
| 2D support including Aztec, Aztec Mesa, Data Matrix, MaxiCode, PDF 417, RSS-14 Composite and others | | • | • |
| Extended 2D support including TLC39 and QR Code | | | • |
| Data Origins | | | |
| Fixed/Constant | • | • | • |
| Keyboard entry at print time with double entry (verification) ability | no double entry | • | • |
| Picklist "drop-down" data entry for easy and accurate selection of data | • | • | • |
| Data retrieved from a database file | • | • | • |
| Counters/serial numbers with support for alpha/numeric and custom numbering | no custom | • | • |
| Date and time stamping using multiple formats | • | • | • |
| Combination origin for advanced math, string and logical functions | | • | • |
| Databases | | | |
| Data Grid for viewing database records "live" on the design screen | • | • | • |
| Directly edit database records in Data Grid | | | • |
| 32-Bit OLE DB database support | • | • | • |
| Sequential and keyed database access | sequential only | • | • |
| SQL query capability | | • | • |
| Retrieve data from an unlimited number of database files per label | one per label | • | • |
| Includes separate database utility program | | • | • |
| Printing | | | |
| Windows driver printer support | • | • | • |
| High speed driver support for over 1000 thermal and thermal transfer printers | | • | • |
| Variable duplicate count from any origin | • | • | • |
| Stacked printing ability with multiple labels per page | | | • |
| Reverse the order of pages in a print job | | | • |
| Tools | | | |
| Directly modify printer code with Job Modifier | | • | • |
| Pocket LABEL MATRIX support | | • | • |
| Pocket LABEL MATRIX licenses | | (0) | (1) |
| Automatic printing from a source database | | • | • |
| Command line support | | • | • |
| Export image and variable information to a data file | | • | • |
| User-definable reports generated from label log files | | | • |
| Print labels directly from label preview/description screen | | | • |
| Code Converter label conversion utility | | | • |
| RFID Tag support | | | • |
| ActiveX/OLE Automation | | | • |
| Dynamic Data Exchange (DDE) | | | • |



United States
1-414-535-6200
1-888-629-4444

Canada
1-905-771-4104

France
33-562-601-080

Germany
49-8142-4789-0

Asia
65-6477-7293

China
86-21-6886-3666

Japan
81-45-461-3603

Copyright 2004 Bratou Groupe sarl. All rights reserved. Printed in the USA 03/04. TEKLYNX and LABEL MATRIX are registered trademarks of Bratou Groupe sarl or its affiliated companies. All other brands and product names are the trademarks of their respective owners. (Y188852)